



**Institution of
Surveyors of
Kenya**

TRAVEL ADVISORY

**1st Kenya Geospatial and Real
Estate Conference and 57th ISK
AGM**

Date: 13-15 May, 2026

**Venue: Prideinn Paradise Beach
Resort and Spa, Mombasa**



Welcome

We are delighted to welcome you to the 1st Kenya GeoSpatial and Real Estate Conference and 57th Annual General Meeting (AGM) to be held from 13th to 15th May 2026 at the PridelInn Paradise Beach Resort and SPA, Mombasa.

This advisory has been prepared to provide essential information on weather conditions, travel planning, accommodation options, and safety considerations to ensure a smooth and enjoyable experience throughout your stay.



About the Host City – Mombasa

Mombasa is Kenya's second-largest city and a major coastal hub located along the Indian Ocean. It serves as a key gateway for international trade, tourism, and maritime activities due to its strategic port.

The city is known for its vibrant blend of cultures, influenced by African, Arab, Asian, and European heritage. This diversity is reflected in its architecture, cuisine, language, and social life.

Mombasa offers a unique combination of modern urban life and rich historical heritage, making it an ideal location for both business and leisure.



WEATHER AND CLIMATE

Climate Overview

The March to May period is the main rainfall season over most parts of Kenya and much of equatorial Eastern Africa. Mombasa experiences a tropical climate characterized by:

- Warm temperatures throughout the year
- High humidity levels
- Two main rainy seasons (long rains and short rains)



Weather in May

The conference week, 11 – 16 May 2026, is expected to be generally warm, with daytime temperatures reaching around 30°C. Mornings will typically feature a mix of sunshine and clouds. As the days progress, expect a recurring pattern of afternoon thunderstorms, bringing moderate chances of rain and brief but potentially heavy downpours.

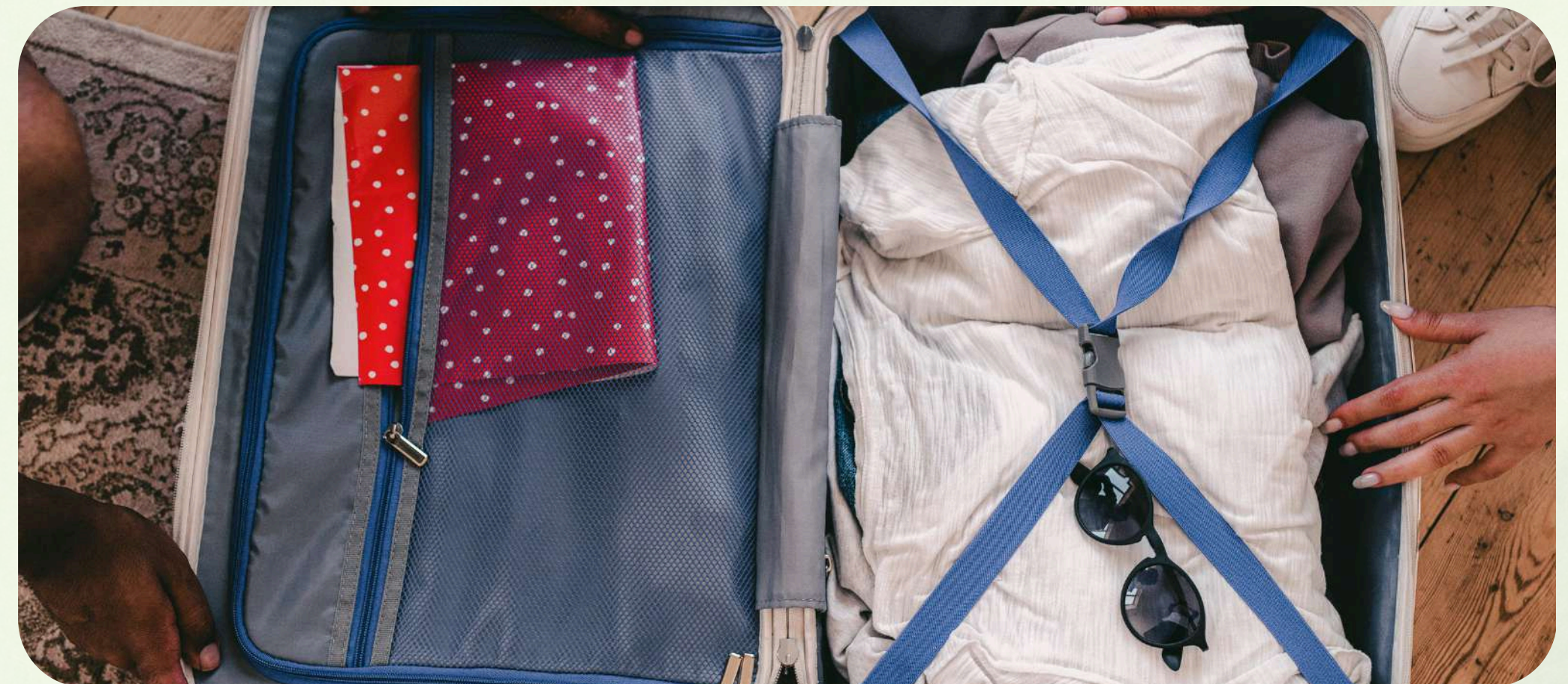
Evenings and nights will be cooler, with temperatures settling near 23°C. Early nighttime periods may still see lingering thunderstorms before conditions gradually become partly cloudy and more stable overnight.



What to Pack

Delegates are advised to carry:

- Light, breathable clothing (cotton or linen)
- A light raincoat or waterproof jacket
- Umbrella
- Comfortable walking shoes (preferably waterproof)
- Sandals or open shoes for casual wear
- Sunscreen and sunglasses
- Insect repellent
- Swimwear (for hotel and beach use)



Accommodation Options

Mombasa offers a variety of accommodation options catering to different budgets. Below are recommended accommodation options:

PrideInn Paradise Beach Resort and SPA

The hotel features elegantly designed rooms and suites, each offering breathtaking ocean views and access to world-class facilities, including an expansive pool and direct beach access.



- Location: Shanzu Beach, North Coast
- Price Range: KES 20,000 – 25,000 per night
- Contact: +254 709 532 000
- Amenities: Free Wi-Fi, swimming pool, SPA, gym, conference facilities, beach access

Sarova Whitesands Beach Resort and SPA

Sarova Whitesands Beach Resort and SPA is a luxury beachfront resort offering stylish rooms and suites with stunning views, five swimming pools, the renowned Tulia SPA, and diverse dining experiences.

- Location: Bamburi Beach
- Price Range: KES 35,000 – 40,000 per night
- Contact: +254 719 022 000
- Amenities: Multiple pools, Wi-Fi, restaurants, beach access, fitness center



Mombasa Continental Resort

Mombasa Continental Resort is a beachfront gem nestled on Shanzu Beach along Kenya's North Coast. Set on 8.3 acres with breath-taking views of the Indian Ocean, the resort offers the perfect blend of comfort, coastal charm, and personalized hospitality for both leisure and business travelers.

- Price Range: KES 13,500 – 26,000 per night
- Location: Shanzu Beach
- Contact: +254 703 076 000
- Amenities: Free Wi-Fi, pool, restaurants, beach access



Severin Sea Lodge

The Severin Sea Lodge is located at Bamburi Beach directly at the Indian Ocean and affectionately built in a traditional African style.

- Location: Bamburi Beach
- Price Range: KES 10,000 – 18,000 per night
- Contact: +254 746 995 690
- Amenities: Free Wi-Fi, pool, restaurants, beach access



Voyager Beach Resort

Voyager Beach Resort enjoys a prime beachfront setting in the coastal suburbs of Mombasa, with the scenic Nyali and Bamburi Beaches just a short distance away. Nearby attractions include Wild Waters and Mamba Village, while windsurfing, sailing, and surfing opportunities abound in the surrounding waters.

- Location: Nyali
- Price Range: KES 12,000 – 20,000 per night
- Contact: +254 711 019 900
- Amenities: Wi-Fi, themed entertainment, swimming pool, all-inclusive options



City Blue Creekside Hotel and Suites

The Severin Sea Lodge is located at Bamburi Beach directly at the Indian Ocean and affectionately built in a traditional African style.

- Location: Bamburi Beach
- Price Range: KES 10,000 – 18,000 per night
- Contact: +254 746 995 690
- Amenities: Free Wi-Fi, pool, restaurants, beach access



Additional Hotels

No.	Hotel/Apartments	Telephone	Room Type	Bed Only	Bed & Breakfast	Half Board	Full Board
1	Kilua Apartments	746994939	1 Bedroom (2 occ.)	KES 15,000	KES 16,500	KES 18,500	KES 21,000
			2 Bedroom	KES 22,500	KES 24,000	KES 27,500	KES 28,500
			3 Bedroom	KES 27,500	KES 29,000	KES 31,000	N/A
2	Basilea Hotel	733652112	Single (1 occ.)	KES 2,000	KES 2,500	KES 3,500	KES 4,500
			Double (2 occ.)	KES 3,000	KES 3,500	KES 5,500	KES 7,500
			Family)	KES 4,000	KES 4,500	KES 6,500	KES 8,000
			Twin	KES 4,500	KES 5,000	KES 7,000	KES 9,000
3	Royal Shaza Suites	799213821	Std Room single occupancy	N/A	KES 6,000	KES 7,500	KES 9,500
			Double occupancy	N/A	KES 11,000	KES 13,000	KES 16,000
4	Nightingale Apartments	722722084	Single (1 occ.)	KES 4,000	KES 5,500	KES 7,500	KES 8,800
			Double (2 occ.)	KES 5,500	KES 7,000	KES 9,000	KES 13,00
			Triple (3 occ.)	KES 9,000	KES 12,000	KES 16,000	KES 20,000
5	Beaumont Resort	717020831	Single (1 occ.)	KES 3,000	KES 3,500	N/A	N/A
			Double/Twin (2 occ.)	KES 3,500	KES 4,000	N/A	N/A

No.	Hotel/Apartments	Telephone	Room Type	Bed Only	Bed & Breakfast	Half Board	Full Board
6	Santori Villas (Emily)	722362044	Bedroom (4 beds, no sharing)	KES 25,000	KES 5,000 per pax	N/A	N/A
			Bedrooms (5 beds no sharing)	KES 30,000	KES 6,000 per pax		
7	Texas Villa	114259821	Single (1 occ.)	KES 1,500	N/A	N/A	N/A
8	Haveton Apartment (Marube)	0722505962 0706554543	Single w/ AC (1 occ.)	KES 2,200	KES 2,500	N/A	Breakfast extra: 500/pax
			Double w/ AC (2 occ.)	KES 4,000	KES 5,000	N/A	Breakfast extra: 500/pax
			1 Bedroom (max 4 occ.)	N/A	KES 6,000	N/A	Breakfast extra: 500/pax
9	Monalisa Hotel (Robina)	705608027	Single Standard (1 occ.)	KES 2,500	KES 3,000	KES 4,000	N/A
			Single (2 occ.)	KES 3,500	KES 4,000	KES 5,500	N/A
			Twin (2 occ.)	KES 4,500	KES 5,000	KES 6,000	N/A

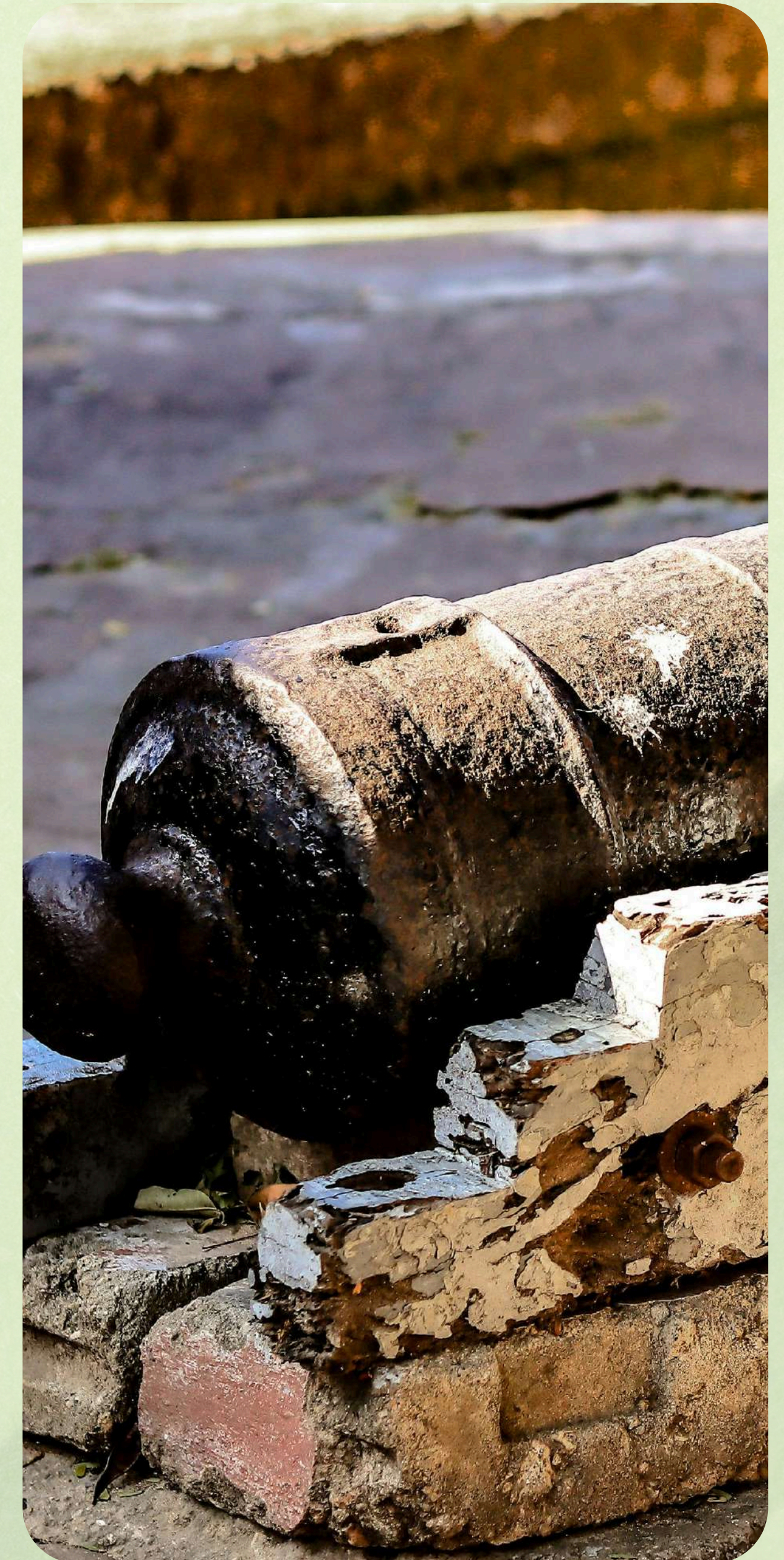
No.	Hotel/Apartments	Telephone	Room Type	Bed Only	Bed & Breakfast	Half Board	Full Board
10	Jambo Travellers	726722813	Single Standard w/ Fan	KES 3,000	KES 3,700	N/A	N/A
			Single w/ AC	KES 3,700	KES 4,300	N/A	N/A
			Double w/ Fan	N/A	KES 5,500	N/A	N/A
			Double w/ AC	N/A	KES 6,100	N/A	N/A
11	Mawenzi Hotel	716726486	Single Standard	KES 3,000	KES 3,500	KES 5,000	KES 6,500
			Single Sharing	KES 3,500	KES 4,500	KES 7,500	KES 10,500
			Deluxe Single	KES 3,500	KES 4,500	KES 6,000	KES 7,500
			Deluxe Double	KES 4,500	KES 6,000	KES 9,000	KES 12,000

TOURIST ATTRACTIONS IN MOMBASA

Delegates are encouraged to explore the following attractions:

Fort Jesus

A UNESCO World Heritage Site built in the 16th century by the Portuguese, showcasing the history of the Kenyan coast. The Fort is located in Mombasa City on the coast of Kenya. Designed by Giovanni Battista Cairati, the Fort is one of the most outstanding and well-preserved examples of 16th Portuguese military fortification and a landmark in the history of this type of construction. The Fort's layout and form reflected the Renaissance ideal that perfect proportions and geometric harmony are to be found in the human body. The property covers an area of 2.36 hectares and includes the fort's moat and immediate surroundings.



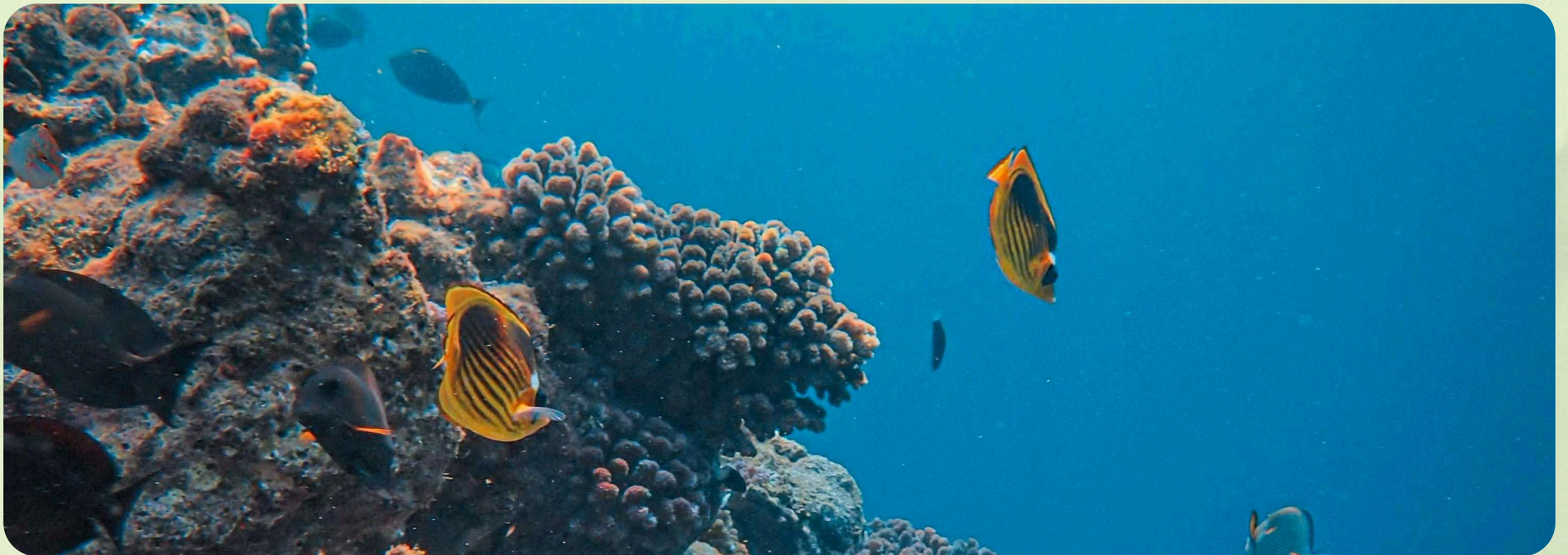
Diani Beach

Diani Beach is a major beach resort on the Indian Ocean coast of Kenya. It is located 30 kilometers south of Mombasa, in the nearby Kwale County and also known to be a popular kite surfing location. Diani Beach is about 10 kilometers long, from the Kongo River to the north and Galu Beach. It is adjacent to the town of Ukunda, the population of which nears 100,000 inhabitants. Diani Airstrip is located close to the beach and places to stay.



Mombasa Marine National Park

Synonymous with sun, sand, beautiful warm weather and a vibrant town life, Mombasa is one of the great coastal destinations that wanderlust leads most visitors that love the beach to. While in Mombasa, Mombasa Marine National Park is a great find. Her alluring beauty illuminated by the coral reefs coupled with crystal clear ocean waters and marine life will capture you like a magnet.



Old Town Mombasa

Mombasa Old Town comprises a group of historical buildings dating from the 18th century, which combines African, Arabic and European influences.

It was a main center for trade between Africa and the Arab World, with trade routes even going as far as India and China. At different points in history, Mombasa was ruled by the Portuguese, Arabs and British. The WHS of Fort Jesus is located in the Old Town



Safety and Regulations

Mombasa, Kenya is generally safe for tourists, but as with any destination, it's important to stay aware of your surroundings. Stick to well-lit areas at night and avoid isolated spots. Local authorities and the conference organizers will be available to assist if any issues arise. We hope this travel advisory helps you prepare for an amazing and productive time in Mombasa! For further questions or clarifications, feel free to reach out to us via 0737929737.

